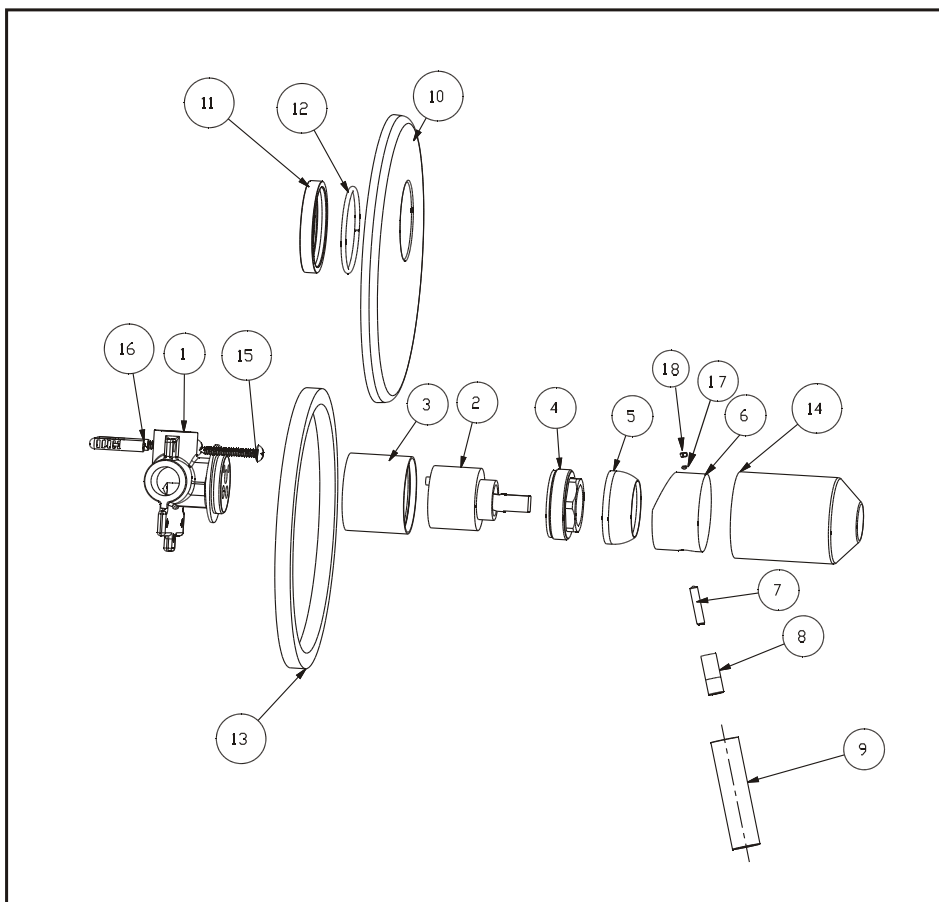


Concealed shower mixer

Installation Instruction

Please read this instruction carefully so as to avoid the installation difficulty.

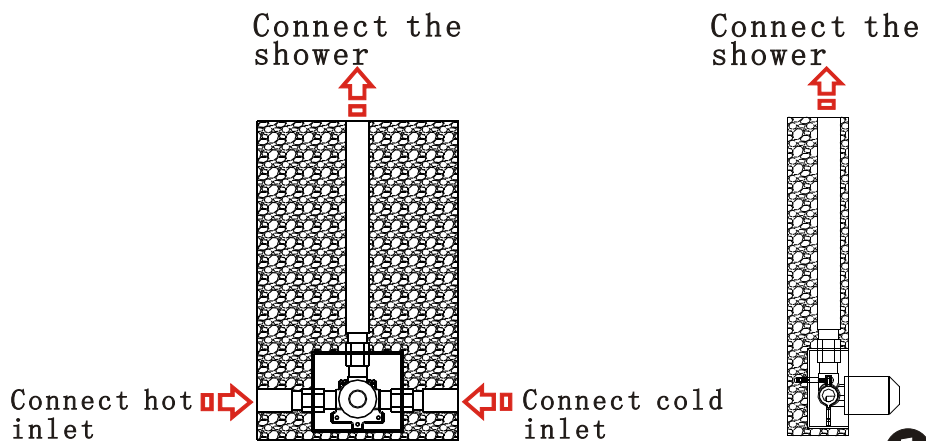


Components List

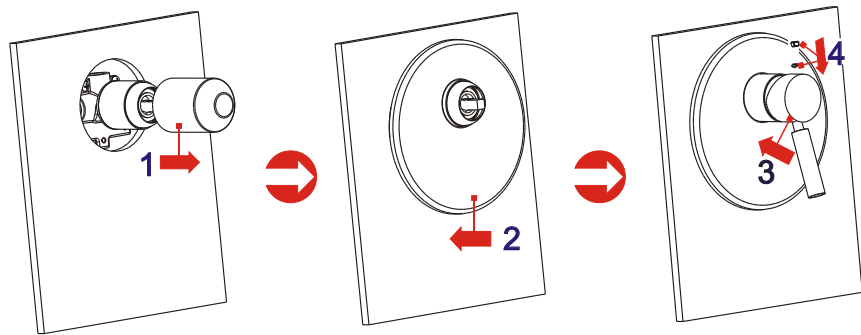
No.	Component	Material	Quantity
1	Main body	BRASS	1
2	Ceramic cartridge		1
3	Copper cover	BRASS	1
4	Cartridge fastener	BRASS	1
5	Cap	BRASS	1
6	Handle cover	BRASS	1
7	Female allen screw	S.S 304	1
8	Connecting rod for handle	BRASS	1
9	Handle	BRASS	1
10	Escutcheon	BRASS	1
11	Fastening ring	BRASS	1
12	Sealing strip	NBR	1
13	Ring	FOAM	1
14	Safe cover for main body	PE	1
15	Self-tapping screw	BRASS	1
16	Plastic sleeve	PE	1
17	Female allen screw	SUS304	1
18	Ornate plug	ABS	1

inocal

Installation Step



1



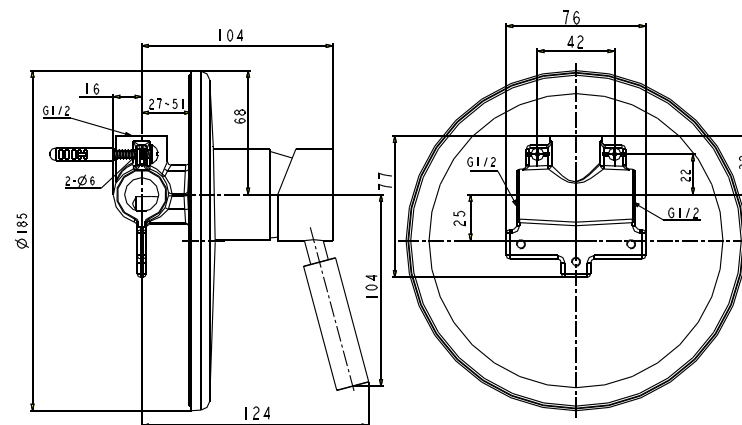
2

✱ Read the Installation Fig and confirm the installing position.

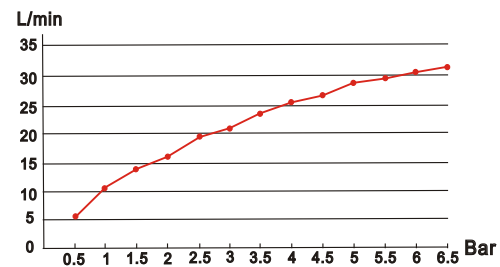
✱✱ Test:

Open the supply pipes, close the ceramic cartridge and check the connections for leakage; open the ceramic cartridge and check the smooth water flow. Decorate the wall after checking and remove the safe cover. Install the escutcheon and handle.

Installation Fig



Flow rate Curves



Test pressure: 1.6MPa (16bar)

Flow pressure:

Min 0.05MPa

Max 1.60MPa

Recommended pressure:

0.1MPa to 0.8MPa (1 to 8 bar)

Note

- 1.Ensure to clean the water supply pipe before installing to avoid being jammed.
- 2.The cold-water supply must be connected on the right and the hot-water supply on the left.
- 3.Check the installing dimension according to the Figure and ensure it is installed correctly.
- 4.Hot-water inlet must not be over 80°C.